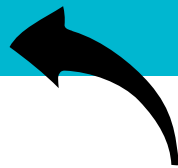


Getting a PCR test or have a positive rapid COVID test?



Complete our Report and Support screening form at c19hc.nshealth.ca/self-report

If you do not have internet access, please call 1-833-797-7772 to have the form completed.

Why is Nova Scotia Health collecting this information?

This information is used to:

- identify as early as possible, people who are eligible for and may benefit from COVID medication to reduce the risk of hospitalization.
- assess and manage cases where a person may be at greater risk of serious illness and connect them with supports such as pulse oximeter, etc.

I haven't tested positive (PCR) yet. Why do you need my information now?

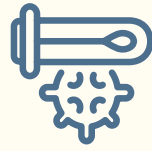
For people who end up testing positive and needing treatment or support, it's important that we minimize the time it takes to access those supports.

If your test result is negative, we will not use your information any further. It will be deleted.

Please note: The Report and Support online screening form needs to be filled out for each PCR or positive rapid COVID test. We do not keep this information.

MILD COVID-19 SYMPTOMS?

Early detection is key when it comes to being considered for medication for COVID-19. Treatment for mild COVID-19 is recommended within 5 to 7 days of symptom onset.



1 TEST EARLY

Test within 48 hours of noticing mild symptoms of COVID-19, such as cough, fever, shortness of breath or difficulty breathing, loss or change in sense of smell or taste, sore throat, runny nose, headache, extreme fatigue, nausea, diarrhea or vomiting. Visit <https://covid-self-assessment.novascotia.ca/en> to find out what kind of test you are eligible for.



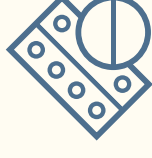
2 REPORT

The Report and Support online screening form assesses a person's risk for serious illness due to COVID-19, and their eligibility for medications that could reduce the risk of hospitalization. Fill out the form as soon as you book your PCR test or get a positive rapid test result.



3 SUPPORT

Based on your Report and Support online screening form, you may be contacted by a health care professional to determine if support is needed, including medication or a pulse oximeter.



4 MEDICATION

Medication can reduce the progression to severe COVID-19 and may prevent people with mild symptoms from requiring hospital admission. Testing within 48 hours of noticing symptoms and reporting positive tests ensures you are considered for medication within the time frame they are recommended.