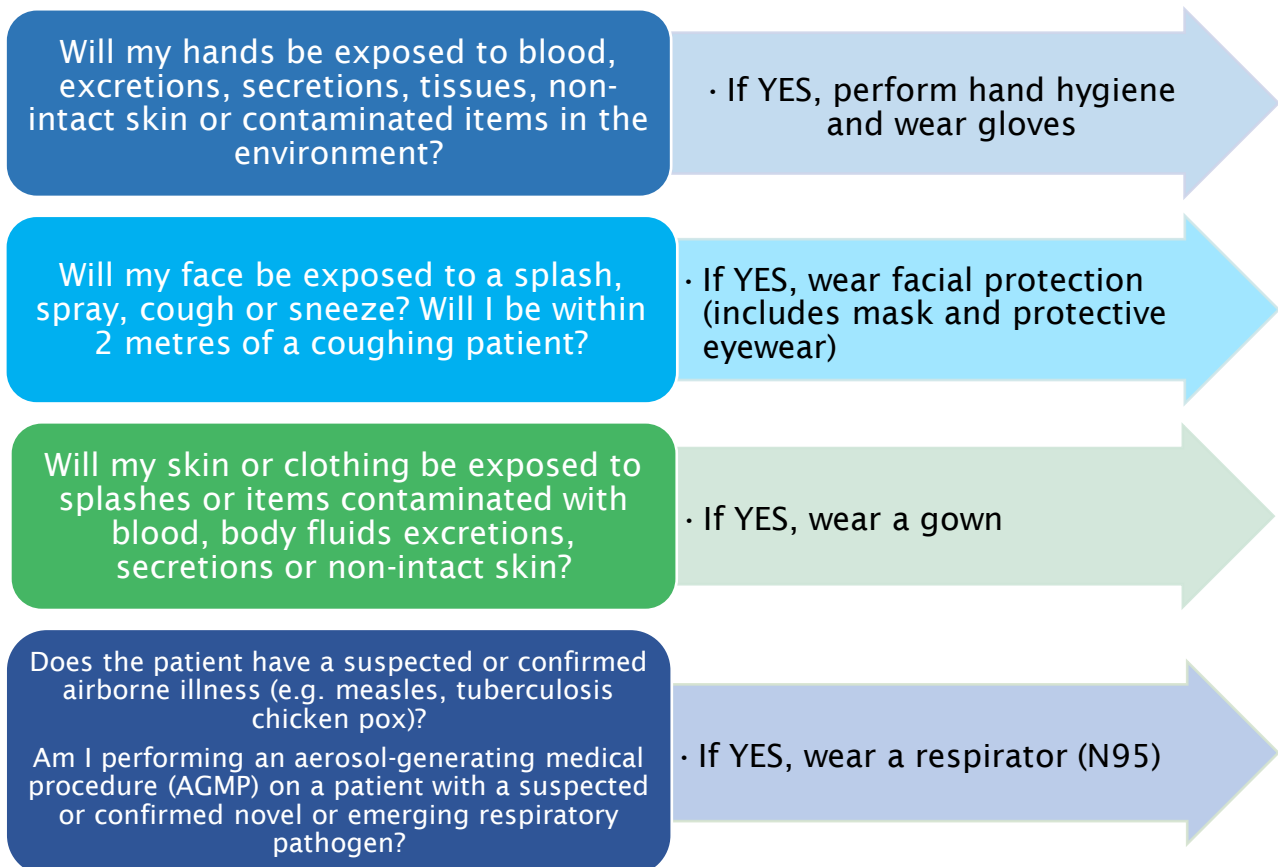


POINT OF CARE RISK ASSESSMENT

Before each patient/resident/client interaction, the health care worker completes a 'Point of Care Risk Assessment' (PCRA) by asking the following questions to determine the risk of exposure and appropriate Routine Practices and Additional Precautions required for safe care:

- What are the patient's symptoms?
- What is the degree of contact?
- What is the degree of contamination?
- What is the patient's level of understanding and cooperation?
- What is the degree of difficulty of the procedure being performed and the experience level of the care provider?
- What is my risk of exposure to blood, body fluids, excretions, secretions, non-intact skin and mucous membranes?

The PCRA allows the health care worker to determine what personal protective equipment (PPE) to select and wear for that interaction. PCRA should be performed even if the patient has been placed on Additional Precautions as more PPE may be required.



**REMEMBER: Perform Hand Hygiene before and after PPE use
so you do not introduce germs to patients or yourself.**