

# Roche at-home rapid COVID-19 test

**Note:**

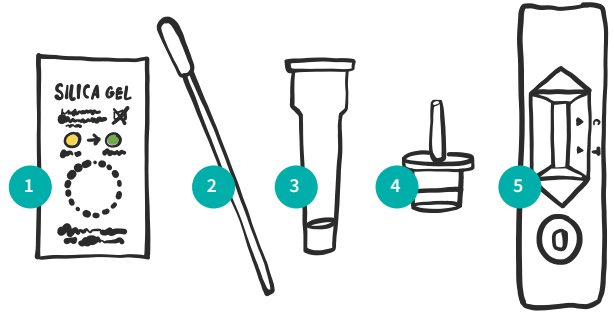
It is important to follow the instructions carefully for accurate results.

**Your testing kit contains:**

1. silica gel pack (do not use test if beads are green)
2. nose swab
3. tube
4. dropper lid
5. test unit

**You will need:**

- ✓ clean, level surface
- ✓ paper towel
- ✓ hand sanitizer
- ✓ timer or clock

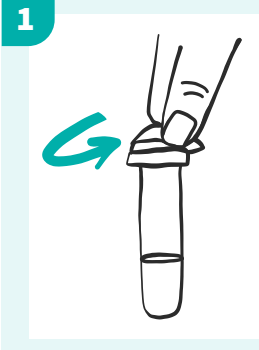


Adapted from Roche product insert — Updated Mar 1, 2022

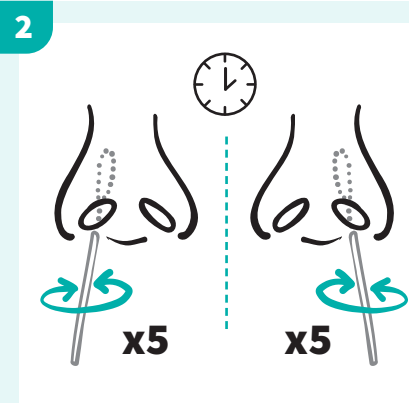
**Before you start:**

- ✓ Clean your hands.
- ✓ Place paper towel on a clean, level surface.
- ✓ Open the contents of your testing kit.
- ✓ Place tube in stand so that it is upright.
- ✓ Write your name with marker or pencil on the unit if testing more than one person.

Scan this QR code for an instructional video:  
[testtoprotect.ca/biosensor](https://testtoprotect.ca/biosensor)



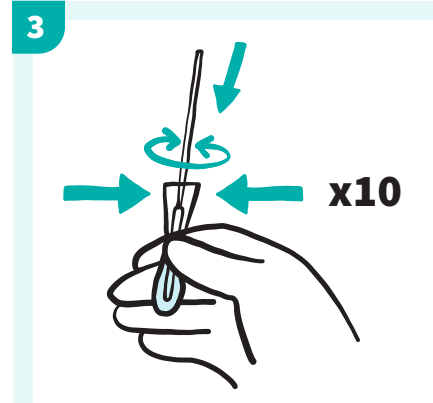
Peel the top off the tube, being careful not to spill the clear liquid.  
Put the tube into the tube holder hole on the top of the box.



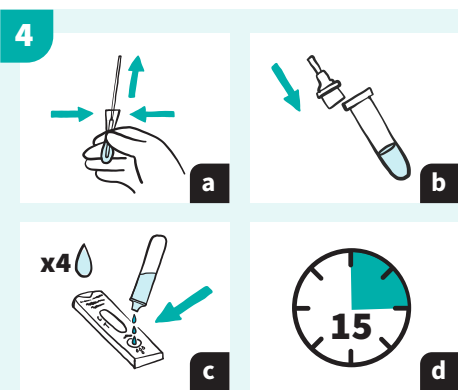
Put the swab into your nostril about 2cm (for small children, just put the swab into the nostril).

Rub and rotate the swab vigorously 5 times, for at least 15 seconds.

Repeat for the other nostril using the same swab (your eyes may water).



Gently lower swab into the tube of liquid and stir the swab in the liquid at least 10 times while squeezing the tube around it.



Squeeze the liquid out of the swab by pinching the tube and slowly pulling the swab out (a). **Throw out the swab.**

Put the dropper lid on the top of the tube (b) and turn it upside down to gently squeeze 4 drops of liquid into the small round well of the test unit (c). **CAUTION**, the drops come out quickly.

Leave the test unit on a level, flat surface for 15 minutes (d).

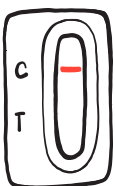
If you leave the test longer than 30 minutes, you may receive incorrect results.



When finished, save your tube stand and put remaining testing supplies in the garbage, sanitize your hands and clean your testing space.

**!** The area that displays the results will turn pink before turning back to white when it is time to read the result.

**RESULTS (AFTER 15-30 MINUTES)**

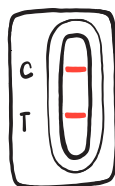


**NEGATIVE — ONE LINE**

one line at the C (control) mark, no line at the T (test) mark

Please note:

- ✓ A single negative result cannot be used to rule out COVID-19 in a person with symptoms.
- ✓ Stay at home if sick and repeat the test in 48 hours.



**POSITIVE — TWO LINES**

one line at the C (control) mark, one line at the T (test) mark

If you test positive, you have the option to confirm your positive rapid test result with a PCR test. To book, please complete the online assessment at [covid-self-assessment.novascotia.ca/en](https://covid-self-assessment.novascotia.ca/en) or call 811.

Whether or not you choose to get a confirmatory PCR test, you need to follow these instructions:

- ✓ Isolate immediately.
- ✓ Notify Public Health of your positive rapid test result by completing the Report and Support form at [c19hc.nshealth.ca/self-report](https://c19hc.nshealth.ca/self-report) or call 1-833-797-7772 if you do not have access to the internet or need assistance filling it out. This is used to identify those who are eligible and would benefit from quick access to COVID-19 medications.
- ✓ Consider yourself as having COVID-19, assume you are contagious and visit [nshealth.ca/testedpositiveforcovid](https://nshealth.ca/testedpositiveforcovid) to get more information on what you and those around you need to do.



**INVALID** — If your test does not match either the negative or positive examples, the test should be repeated with a new kit.