

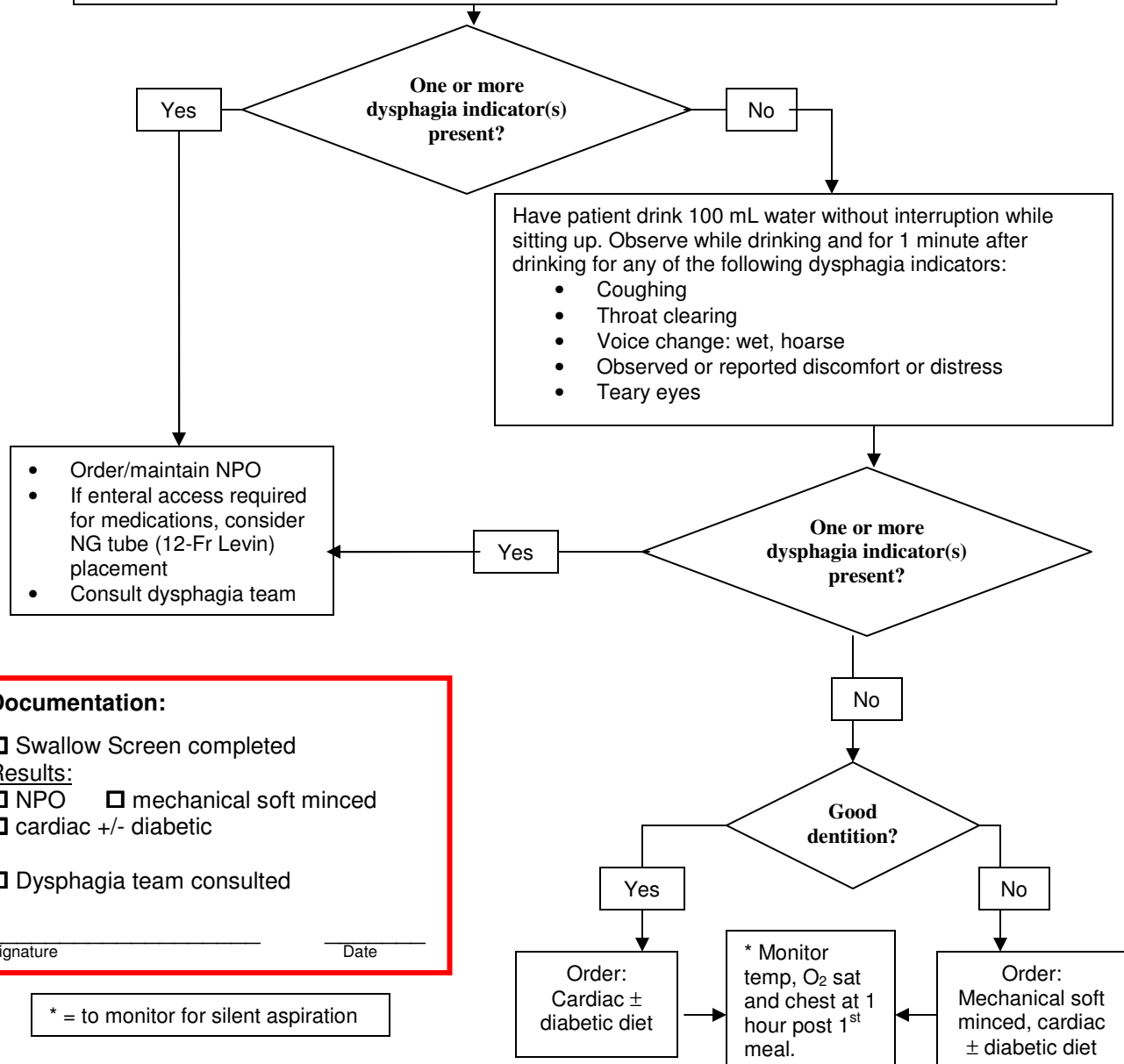


- St. Martha's Regional Hospital
- Strait Richmond Hospital
- Guysborough Memorial Hospital
- St. Mary's Memorial Hospital
- Eastern Memorial Hospital

Stroke Swallow Screen

Note presence of dysphagia indicators:

- Inability to manage own secretions by swallow
- Abnormal cranial nerve findings affecting face, palate and tongue
- Drowsy, variable level of arousal/alertness
- Inability to cough
- Coughs frequently
- Clears throat frequently
- Inability to voice sounds
- Voice sounds wet or hoarse
- Inability to sit upright (with support)
- Respiratory status compromised (e.g., dyspnea, pneumonia, severe COPD)
- Suspected aspiration of food/drink



Documentation:

Swallow Screen completed

Results:

NPO mechanical soft minced

cardiac +/- diabetic

Dysphagia team consulted

Signature _____ Date _____

* = to monitor for silent aspiration